

Features

Electrical Properties

Parameter:	Description
Frequency Band:	1575.42 MHz
Nominal Impedance:	50 Ω
Polarization:	Linear
V.S.W.R:	1.5
Gain:	1.5 dBi



Mechanical Properties

Parameter:	Description
Antenna Type:	Chip antenna
Connector Type:	SMD
Antenna Dimensions:	4 * 10 * 3 mm \pm 0.3
Operating Temperature Range:	-40°C~+105°C
Storage Temperature Range:	-40°C~+105°C

Typical applications

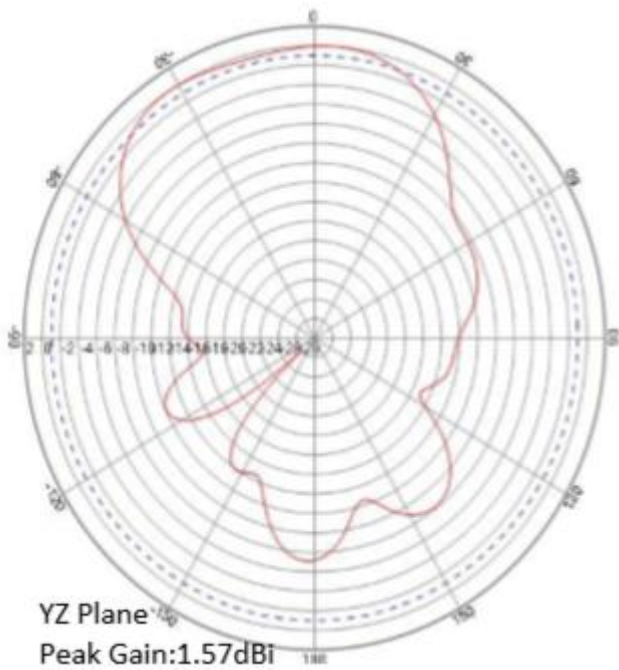
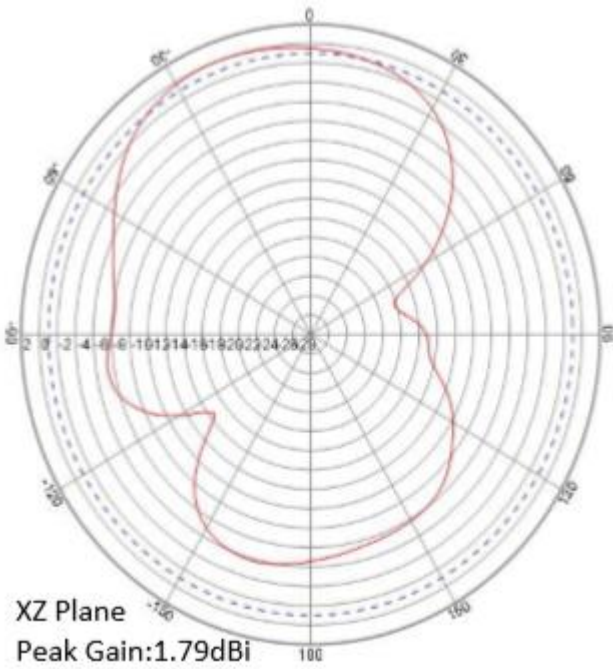
- M2M
- GPS
- GLONASS

Description

The ERF4039 antenna is an internal SMD GPS antenna. The antenna requires a ground plane of 50 x 100 mm. also it is recommended to use a matching filter to tune the performance of the antenna.

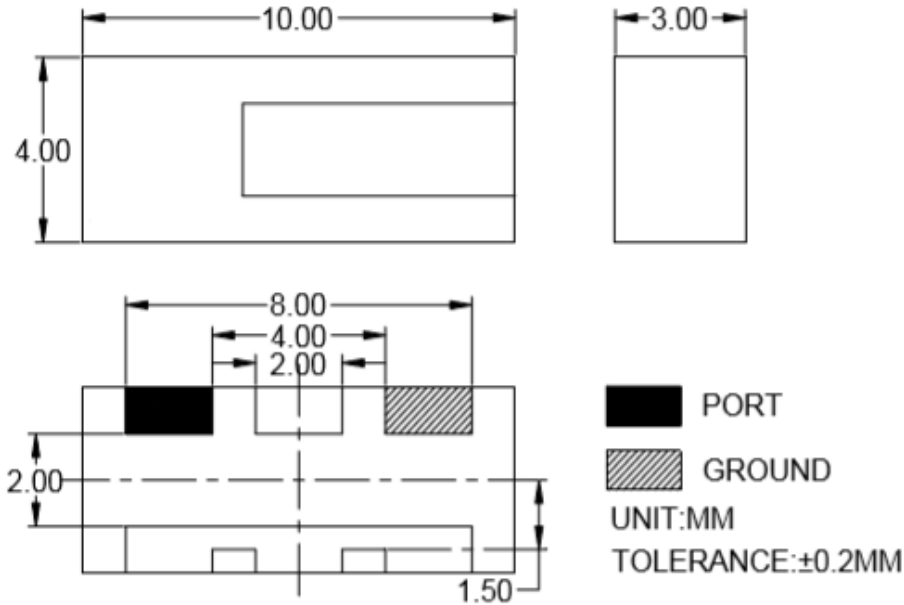
The antenna can be used for applications such as, M2M, GPS and GLONASS.

Antenna Properties

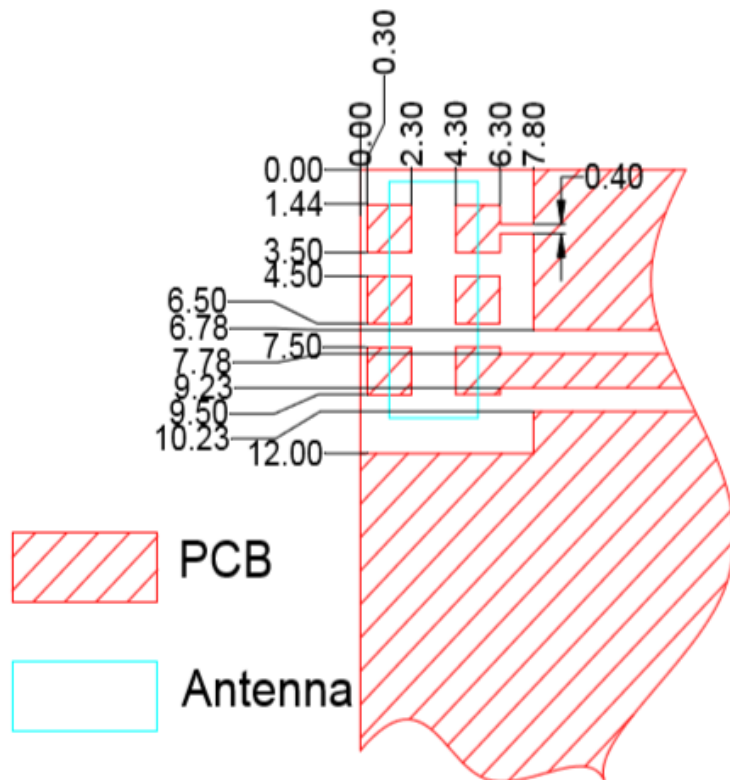


Dimensions

*Unit:mm



Test Setup





Ordering information

Ordering can be done via www.summit-electronics.com or via info@summit-electronics.com. Please contact us for more information. Customisation of the product is available on request.

Technical support

For all product questions please contact us via info@summit-electronics.com